



# ZPDA

## EXTERNALGEARDOSING PUMP



The high-precision ZPDA dosing pumps are specifically designed for start stop dosing. The low pulsation gear design provides a constant flow with very rapid pressure build-up. Internal clearances based on fluid viscosities are held within a few microns to insure the highest efficiency possible, even at high differential pressures up to 200 bar. Depending on the application, DLC coatings are available for the wetted parts to provide additional corrosive resistance and abrasive particle resistance as well. Direct mounting of a VSE flow meter on the rear plate is also available for closed loop control.

## OPERATING CONDITIONS

### SPEED

1 – 200 rpm  
(Depending on the respective operating conditions)

### PUMP PRINCIPLE

Low pulsation external spur gears

### ROTATION

Clockwise (cw), right

### VISCOSITY

1 – 1,000,000 mPa·s  
(Depending on the respective operating conditions)

### DISPLACEMENTS CC/REV

ZPDA1: 0.1/0.3 / 0.6/1.2 / 1.8 / 2.4 / 3.0 / 4.8 / 6.0  
ZPDA2: 6.0/10.0 / 12.0 / 16.0 / 20.0 / 22.0 / 26.0

### TEMPERATURE

-20°C up to +150°C (standard version)  
Special designs are available for deviating temperatures.

### PRESSURE

Operating pressure max. 200 bar

### MATERIALS

440B stainless steel

### COMMON APPLICATIONS

Dosing of polyurethanes, isocyanate, polyol, catalyst, additives, silicones, fuels, adhesives, oils, hotmelts, paints and ink

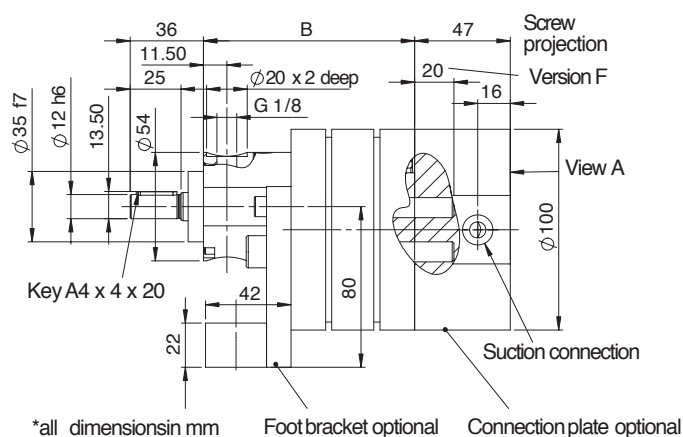
### HIGHLIGHTS

- Low-pulsation and precise dosing of the medium being transferred
- High-precision “start–stop dosing”
- Rapid pressure build-up
- Option for direct mounting of VSE flow meter
- Corrosion/wear resistant coatings

## DISPLACEMENT SIZES & SPECIFICATION

Size	Displacements cc/rev	Flowrate [l/min] at		Operating pressure max. bar	Dimension "B" mm
		1 rpm	200 rpm		
1	0.1	0.0001	0.02	200	85.10
1	0.3	0.0003	0.06	200	89.30
1	0.6	0.0006	0.12	200	95.60
1	1.2	0.0012	0.24	200	91.20
1	1.8	0.0018	0.36	200	95.40
1	2.4	0.0024	0.48	200	99.60
1	3.0	0.003	0.60	200	103.70
1	4.8	0.0048	0.96	200	103.70
1	6.0	0.006	1.20	200	109.00
2	6.0	0.006	1.20	200	117.20
2	10.0	0.01	2.00	200	123.60
2	12.0	0.012	2.40	200	126.80
2	16.0	0.016	3.20	200	133.20
2	20.0	0.02	4.00	200	139.60
2	22.0	0.022	4.40	200	142.80
2	26.0	0.026	5.20	200	149.20

### SIZE 1



### SIZE 2

