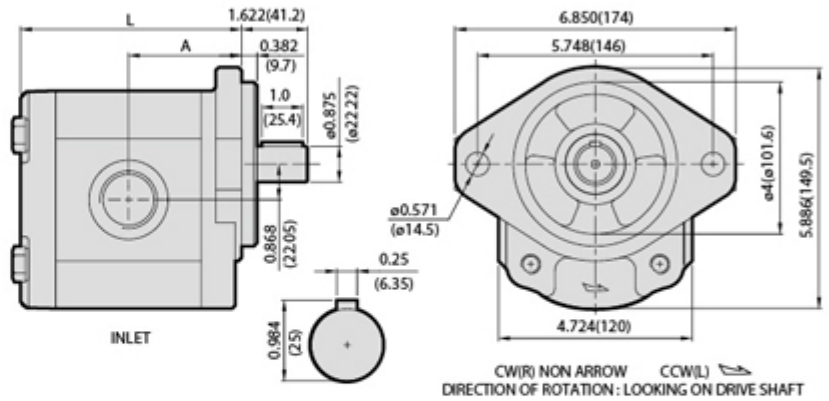




OVERALL DIMENSIONS



ORDERING EXAMPLE



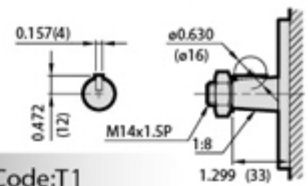
If you need pump with displ.2.01 c.i.r and rotation is cw, the model number is : **3GB6U133R**

PERFORMANCE DATA

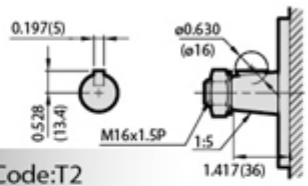
MODEL	DISPLACEMENT		PRESSURE psi(MPa)		RPM RANGE	DIMENSIONS inch(mm) SUITABLE "B", "C", "E" MOUNTING FLANGES		WEIGHT	
	c.i.r	cm <sup>3</sup> /r	CONTINUOUS	MAX.		A	L	Kg	LBS
18	1.10	18.0	3500(25)	3800(27)	3000	2.539(64.5)	4.961(126)	8.4	18.5
20	1.22	20.0	3500(25)	3800(27)	3000	2.559(65.0)	5.000(127)	8.5	18.7
23	1.40	23.0	3500(25)	3800(27)	3000	2.579(65.5)	5.039(128)	8.6	18.9
25	1.52	25.0	3500(25)	3800(27)	3000	2.618(66.5)	5.118(130)	8.7	19.1
28	1.70	28.0	3500(25)	3800(27)	3000	2.657(67.5)	5.197(132)	8.9	19.6
33	2.01	33.0	3500(25)	3800(27)	3000	2.736(69.5)	5.354(136)	9.1	20.0
38	2.31	38.0	3500(25)	3800(27)	3000	2.815(71.5)	5.512(140)	9.3	20.5
44	2.68	44.0	3100(22)	3400(24)	2500	2.894(73.5)	5.669(144)	9.5	20.9
52	3.17	52.0	2800(20)	3100(22)	2500	2.992(76.0)	5.866(149)	9.8	21.6
60	3.66	60.0	2600(18)	2800(20)	2500	3.110(79.0)	6.102(155)	10.0	22.0
70	4.27	70.0	2300(16)	2600(18)	2500	3.248(82.5)	6.378(162)	10.4	22.9
80	4.88	80.0	2100(15)	2400(17)	2300	3.346(85.0)	6.575(167)	10.7	23.5
90	5.49	90.0	2000(14)	2300(16)	2000	3.465(88.0)	6.811(173)	11.1	24.4

DRIVE SHAFTS

SUITABLE FOR C FLANGE

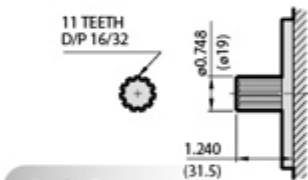
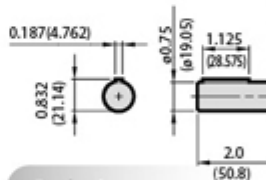
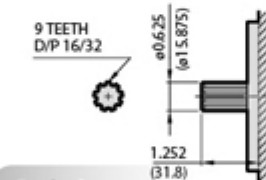
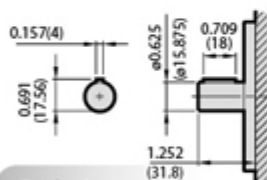


SUITABLE FOR E FLANGE

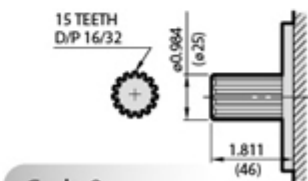
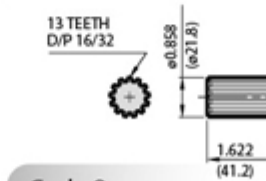
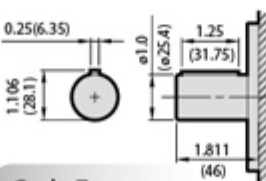
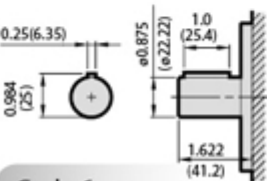


DRIVE SHAFTS

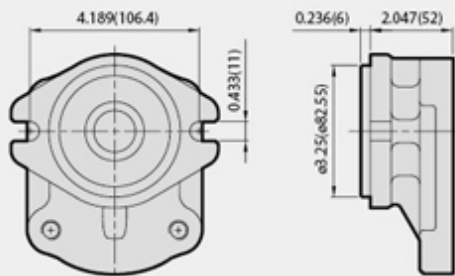
SUITABLE FOR A FLANGE



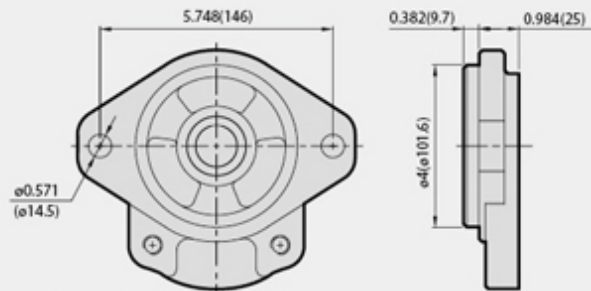
SUITABLE FOR B FLANGE



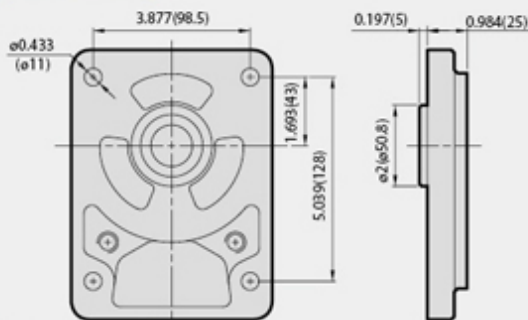
## ■ MOUNTING FLANGES



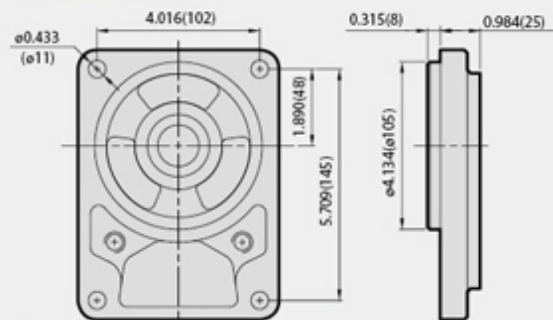
Code:A



Code:B



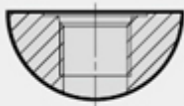
Code:C



Code:E

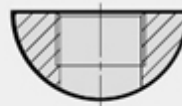
## ■ PORTS

### UNF



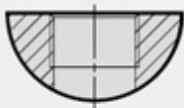
Code	INLET	OUTLET
U1	1-5/16-12 UNF# 16	1-1/16-12 UNF# 12
U2	1-5/8-12 UNF# 20	1-1/16-12 UNF# 12
U3	1-7/8-12 UNF# 24	1-5/16-12 UNF# 16

### PT



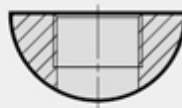
Code	INLET	OUTLET
P1	PT 1"	PT 3/4"
P2	PT 1-1/4"	PT 3/4"
P3	PT 1-1/2"	PT 1"

### NPT



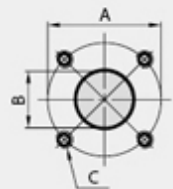
Code	INLET	OUTLET
N1	NPT 1"	NPT 3/4"
N2	NPT 1-1/4"	NPT 3/4"
N3	NPT 1-1/2"	NPT 1"

### BSPF



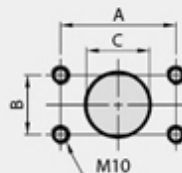
Code	INLET	OUTLET
B1	BSPF 1"	BSPF 3/4"
B2	BSPF 1-1/4"	BSPF 3/4"
B3	BSPF 1-1/2"	BSPF 1"

### FLANGE (SQUARE)



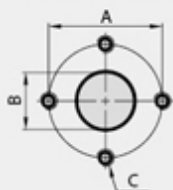
Code	PORT	A	B	C
F1	INLET	$\phi 1.575(\phi 40)$	$\phi 0.787(\phi 20)$	M6
	OUTLET	$\phi 1.378(\phi 35)$	$\phi 0.591(\phi 15)$	M6
F2	INLET	$\phi 2.165(\phi 55)$	$\phi 1.063(\phi 27)$	M8
	OUTLET	$\phi 2.165(\phi 55)$	$\phi 0.748(\phi 19)$	M8

### FLANGE(RECTANGLE)



Code	PORT	A X B	C
F3	INLET	2.063(52.4)x1.031(26.2)	$\phi 0.984(\phi 25)$
	OUTLET	1.874(47.6)x0.874(22.2)	$\phi 0.748(\phi 19)$
F4	INLET	2.307(58.6)x1.189(30.2)	$\phi 1.260(\phi 32)$
	OUTLET	2.063(52.4)x1.031(26.2)	$\phi 0.984(\phi 25)$

### FLANGE(DIAMOND)



Code	PORT	A	B	C
F5	INLET	$\phi 1.575(\phi 40)$	$\phi 0.748(\phi 19)$	M8
	OUTLET	$\phi 1.181(\phi 30)$	$\phi 0.512(\phi 13)$	M6
F6	INLET	$\phi 2.008(\phi 51)$	$\phi 1.063(\phi 27)$	M10
	OUTLET	$\phi 1.575(\phi 40)$	$\phi 0.748(\phi 19)$	M8

### REAR PORT



Code	INLET	OUTLET
ZU1	1-5/16-12 UNF# 16	1-1/16-12 UNF# 12
ZU2	1-5/8-12 UNF# 20	1-1/16-12 UNF# 12
ZU3	1-5/8-12 UNF# 20	1-5/16-12 UNF# 16