

CLEARVIEW VALUE FLOW METER

ClearView Flow Meter is an economical way to monitor water flows, observe case drain flows and verify pump outputs.

TECHNICAL SPECIFICATIONS



Measuring Accuracy
±2% of full scale

Repeatability
±1% of full scale

Flow Measuring Range
1-30 GPM (5-110 LPM)

Maximum Operating Pressure
325 PSIG (22.4 Bar)

Maximum Operating Temperature

ClearView H2O 200°F (93°C) (water only)
ClearView+ 250°F (121°C)

Standard Calibration Fluids

Oil monitors: DTE 25® @110°F (43°C),
0.873 sg
Water monitors: tap water @70°F (21°C),
1.0 sg

Filtration Requirements

74 micron filter or 200 mesh screen minimum

MATERIALS OF CONSTRUCTION (WETTED COMPONENTS)

	ClearView H2O	ClearView +
End Ports	Brass, Ryton®	Brass, Ryton®
Seals	Viton	Viton
Spring	Stainless Steel	Stainless Steel
Body	Polycarbonate	Polysulfone
Indicator	Polysulfone	Polysulfone

BENEFITS

Visual Inspection of Fluid

The transparent body allows for visual inspection of fluid conditions. Diagnose problems at a glance.

Unrestricted Mounting

Allows for horizontal, vertical or inverted installation and does not require straight plumbing on inlet or outlet.

Compact Design

Measures less than 8" long and 2-7/16" diameter with a rigid tube and union nut design.

Multiple Materials and Calibrations Available

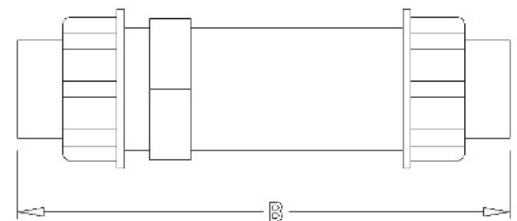
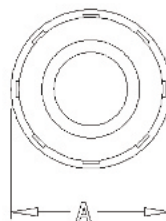
With a variety of wetted materials of construction and media calibrations, the meter will be well suited to your process.

Sensing Method Assures Accuracy

The proven variable area piston metering assembly provides accurate, dependable flow rate indication.

MECHANICAL - SIZE CODE

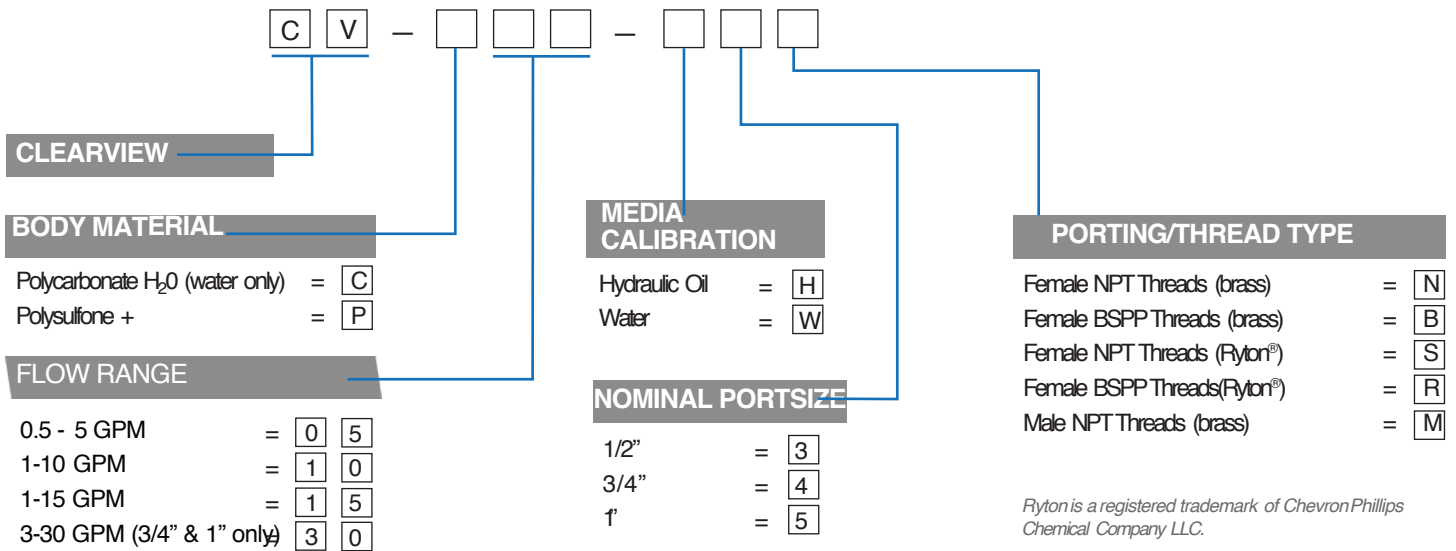
	1/2" Female	3/4" Female	1" Female
A	2-7/16" (62 mm)	2-7/16" (62 mm)	2-7/16" (62 mm)
B- Brass	7-5/32" (182 mm)	7-9/16" (192 mm)	7-9/16" (192 mm)
B- Ryton	7-9/16" (192 mm)	7-9/16" (192 mm)	7-9/16" (192 mm)
Port Type	NPTF, BSPP	NPTF, BSPP	NPTF, BSPP
DIM	1/2" Male	3/4" Male	1" Male
B- Brass	7-21/32" (194 mm)	8-1/64" (204 mm)	8-3/16" (208 mm)
Port Type	NPTF	NPTF	NPTF



CLEARVIEW VALUE FLOW METER

ClearView Flow Meter is an economical way to monitor water flows, observe case drain flows and verify pump outputs.

PART NUMBER GUIDE



TYPICAL PRESSURE DIFFERENTIALS

