

# A341-28 Digital Display

The UKF A341 is a high resolution, fast response display is specifically for use with the VSE Gear and Helical Screw flowmeters (VS, RS, EF & VHM). With up to 3.2 million Pulses per Litre and output frequencies of over 100kHz these meters take a lot of keeping up with.



## FEATURES /BENEFITS

- 6 digit 15mm high LED
- Quadrature input with direction
- Dual input with differential, ratio or add functions
- Fast response time (1mS for frequencies over 2kHz)
- 14 bit DtoA
- Up to 5 calibration curves with 16 point linearisation
- Analogue output (+/- 0-10V or 0(4)-20 mA)
- IP65 front panel
- 96x48 Panel Mount

## Technical Data

<b>Power Supply</b>	Input Voltage:	17-40 Vdc
	Protection Circuit:	Reverse Polarity Protected
	Current Draw:	Approx 100 mA
<b>Sensor Supply</b>	Regulated	2x 5.2V 150 mA & 2x 24V 120 mA
<b>Sensor Inputs</b>	Input Types:	Dual 2x PNP, NPN or Namur
<b>Control Inputs</b>	Number & Format:	4x HTL or PNP
<b>Analogue output</b>	Configuration:	+/- 0-10V or 0(4)-20 mA
	Resolution:	14 Bit
	Accuracy:	+/- 0.1%
<b>Control Outputs</b>	Number:	4
	Voltage & Load:	5-30 Vdc, Max 350 mA
<b>Serial Interface</b>	Format:	RS232
	Baud Rate:	2400 - 38400
<b>Display</b>	Type:	6 Digit High efficiency LED
	Digit Height:	15mm
	Colour:	Red
<b>Housing</b>	Front Panel:	96x48 and 130mm deep
	Cut-out:	91x44
	Protection:	IP65
<b>Ambient Temperature</b>	Operation:	0 to +45oC
	Storage:	-25 to +70oC
<b>Conformity and Standards</b>	EMC 2004/108/EC:	EN61000-6-2, EN61000-6-3,
	LV 2006/95/EC:	EN61010-1

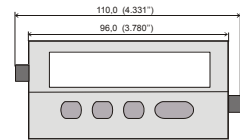
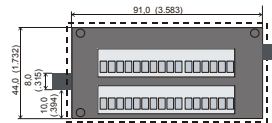
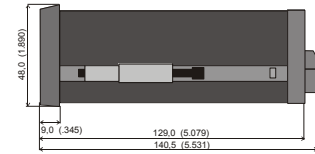
Flow information is processed from the output signals of the VSE flow meters. The device can signal into a freely scalable analogue measurement convert the frequency of the HTL variable (current/voltage) with almost no delay. With an analogue resolution of 14 bit, or as a digital measured value via RS232, these converted signals are then available for further data processing.

Up to 5 flowmeter calibration curves can be stored, this can be for instance: 5 different flowmeter sizes or 1 meter with 5 different viscosity/temperature curves.

To increase accuracy a linearisation with up to 16 calibration points can be programmed.

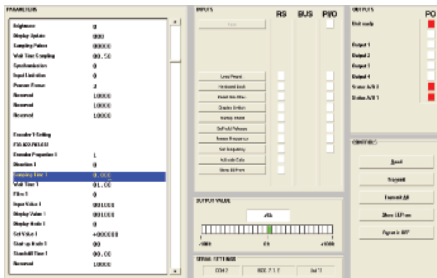
As well as flow rate the A350 can be configured as a totaliser or counter mode, which enables conversion of the total flow rate (volume).

## Mounting Dimensions



Panel cut-out: 91x44

## Set-up via PC software or front panel keys



## Flowmeter connections diagram for A341

