



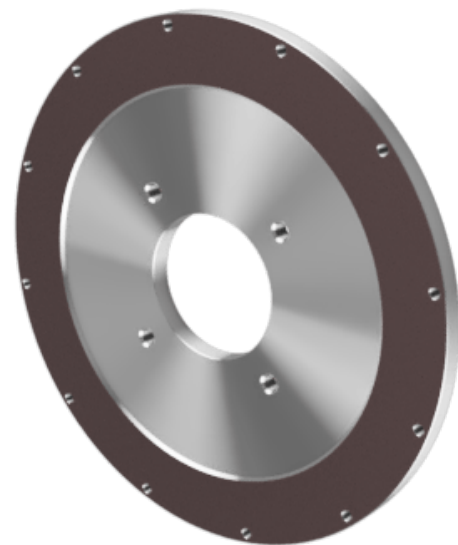
Hayes Pump Mounting Plates



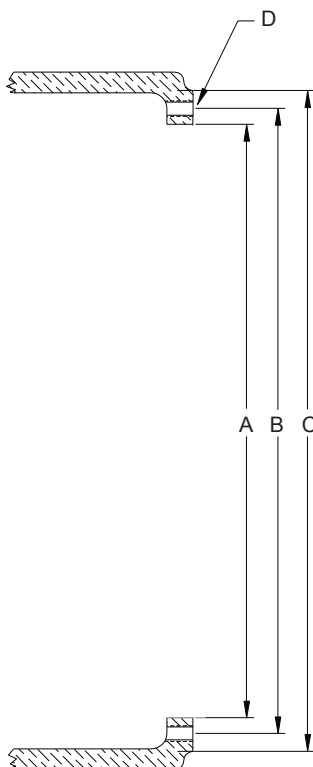
HAYES PUMP MOUNTING PLATES

PRODUCT DESCRIPTION

- Sturdy steel plate for continuous load support
- Multiple thickness options
- Yellow zinc plating available
- Black zinc plating available
- Typical applications: aerial lifts, bucket loaders, skid loaders, excavators, sweeper, wheeled loaders

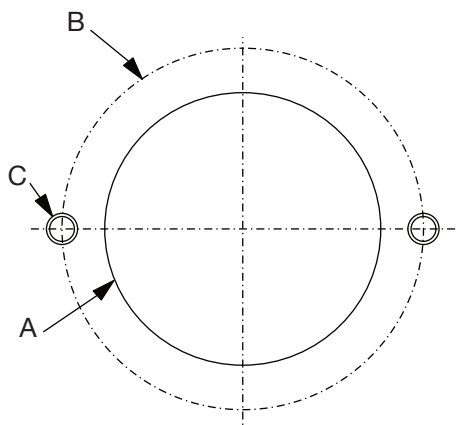


SAE FLYWHEEL HOUSING PUMP MOUNTING PLATE

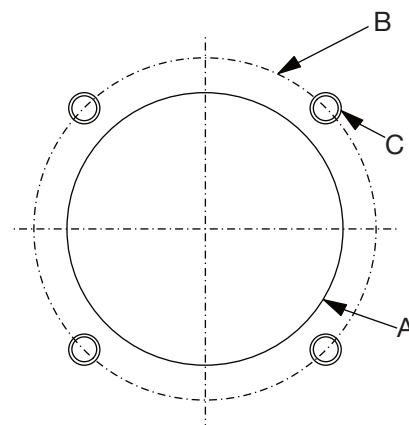


Housing size	A		B		C		Plate thickness		D	
	Inner diameter		Pitch circle		Outer diameter		mm	inch	#D	Size (inch)
	mm	inch	mm	inch	mm	inch				
1	511.175	20.125	530.225	20.875	552.45	21.750	25.4	1	12	31/64
1	511.175	20.125	530.225	20.875	552.45	21.750	15.875	5/8	12	31/64
2	447.675	17.625	466.725	18.375	488.950	19.250	25.4	1	12	27/64
2	447.675	17.625	466.725	18.375	488.950	19.250	15.875	5/8	12	27/64
3	409.575	16.125	428.625	16.875	450.85	17.750	15.875	5/8	12	27/64
4	361.950	14.250	381.000	15.000	403.352	15.880	15.875	5/8	12	27/64
5	314.325	12.375	333.502	13.130	255.600	14.000	15.875	5/8	8	27/64
6	266.700	10.500	285.750	11.250	307.848	12.120	15.875	5/8	8	27/64

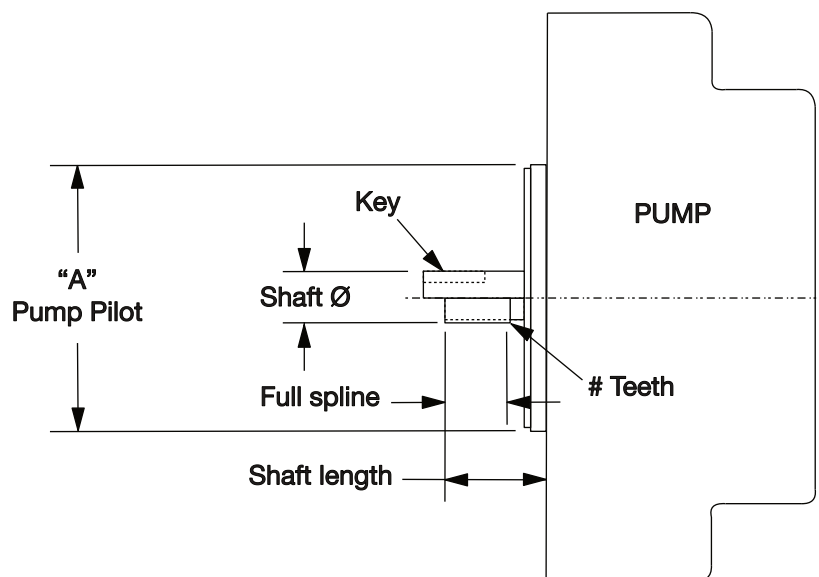
STANDARD SAE PUMP INFORMATION



2-BOLT PUMP FACE



4-BOLT PUMP FACE



Pump mount flange and shaft size SAE J744C	2-Bolt pump				4-Bolt pump				Shaft dimensions			
	A	B	Counter bore Ø	C	A	B	Counter bore Ø inch (mm)	C	Spline	Spline shaft length inch (mm)	Bore & key inch (mm)	Bore & key shaft length inch (mm)
	Bore Ø inch (mm)	Pitch circle inch (mm)		Tapped holes	Bore Ø inch (mm)	Pitch circle inch (mm)		Tapped Holes				
AA	2.000	3.250	7.000	5/16-18	-	-	-	-	9T 20/40	1.060	1/2 - 1/8	1.060
	(50.8)	(82.55)	(177.8)		-	-	-	-				
A	3.250	4.187	7.000	3/8-16	-	-	-	-	9T 16/32	1.248	5/8 - 5/32	1.248
	(82.55)	(106.35)	(177.8)		-	-	-	-				
AH	3.250	4.187	7.000	3/8-16	-	-	-	-	11T 16/32	1.490	3/4 - 3/16	1.248
	(82.55)	(106.35)	(177.8)		-	-	-	-				
B	4.000	5.750	10.500	1/2-13	4.000	5.000	10.500	1/2-13	13T 16/32	1.622	7/8 - 1/4	1.622
	(101.6)	(146.05)	(266.7)		(101.6)	(127.0)	(266.7)					
BB	4.000	5.750	10.500	1/2-13	4.000	5.000	10.500	1/2-13	15T 16/32	1.810	1 - 1/4	1.810
	(101.6)	(146.05)	(266.7)		(101.6)	(127.0)	(266.7)					
C	5.000	7.125	12.500	5/8-11	5.000	6.375	12.500	1/2-13	14T 12/24	2.185	1 1/4 - 5/16	2.185
	(127)	(180.98)	(317.5)		(127.0)	(161.93)	(317.5)					
CC	5.000	7.125	12.500	5/8-11	5.000	6.375	12.500	1/2-13	17T 12/24	2.435	1 1/2 - 3/8	2.435
	(127.0)	(180.98)	(317.5)		(127.0)	(161.93)	(317.5)					
D	6.000	9.000	14.000	3/4-10	6.000	9.000	14.000	3/4-10	13T 8/16	2.935	1 3/4 - 7/16	2.935
	(152.4)	(228.6)	(355.6)		(152.4)	(228.6)	(355.6)					
E	6.500	12.500	16.000	1-8	6.500	12.500	16.000	3/4-10	13T 8/16	2.935	1 3/4 - 7/16	2.935
	(165.1)	(317.5)	(406.4)		(165.1)	(317.5)	(406.4)					
F	7.000	13.781	18.000	1-8	7.000	13.781	18.000	1-8	15T 8/16	3.435	-	-
	(177.8)	(350.04)	(457.2)		(177.8)	(350.04)	(457.2)					

SAE FLYWHEEL HOUSING PUMP MOUNTING PLATE

Part Number	Plate Information		Pump Information		Part Number	Plate Information		Pump Information	
	SAE Housing	Thickness Inch (mm)	SAE Pump Pilot	Bolt Pattern		SAE Housing	Thickness Inch (mm)	SAE Pump Pilot	Bolt Pattern
123008-A02	1	1" (25.4)	B	2-Bolt	123008-DN2	3	5/8" (15.88)	A	2-Bolt
123008-AX2	1	1" (25.4)	C	2-Bolt	123008-DO2	3	5/8" (15.88)	B	2-Bolt
123008-AS2	1	1" (25.4)	D	2-Bolt	123008-DX2	3	5/8" (15.88)	C	2-Bolt
123008-AT2	1	1" (25.4)	E	2-Bolt	123008-DS2	3	5/8" (15.88)	D	2-Bolt
123008-AU2	1	1" (25.4)	F	2-Bolt	123008-DO4	3	5/8" (15.88)	B	4-Bolt
123008-AX4	1	1" (25.4)	C	4-Bolt	123008-DX4	3	5/8" (15.88)	C	4-Bolt
123008-AS4	1	1" (25.4)	D	4-Bolt	123008-DS4	3	5/8" (15.88)	D	4-Bolt
123008-AT4	1	1" (25.4)	E	4-Bolt	123008-DT4	3	5/8" (15.88)	E	4-Bolt
123008-AUR	1	1" (25.4)	F	4-Bolt	123008-DU4	3	5/8" (15.88)	F	4-Bolt
123008-B02	2	1" (25.4)	B	2-Bolt	123008-EN2	4	5/8" (15.88)	A	2-Bolt
123008-BX2	2	1" (25.4)	C	2-Bolt	123008-E02	4	5/8" (15.88)	B	2-Bolt
123008-BS2	2	1" (25.4)	D	2-Bolt	123008-EX2	4	5/8" (15.88)	C	2-Bolt
123008-BT2	2	1" (25.4)	E	2-Bolt	123008-ES2	4	5/8" (15.88)	D	2-Bolt
123008-BU2	2	1" (25.4)	F	2-Bolt	123008-ET2	4	5/8" (15.88)	E	2-Bolt
123008-BX4	2	1" (25.4)	C	4-Bolt	123008-E04	4	5/8" (15.88)	B	4-Bolt
123008-BS4	2	1" (25.4)	D	4-Bolt	123008-EX4	4	5/8" (15.88)	C	4-Bolt
123008-BT4	2	1" (25.4)	E	4-Bolt	123008-ES4	4	5/8" (15.88)	D	4-Bolt
123008-BU4	2	1" (25.4)	F	4-Bolt	123008-GN2	5	5/8" (15.88)	A	2-Bolt
123008-CN2	2	5/8" (15.88)	A	2-Bolt	123008-GO2	5	5/8" (15.88)	B	2-Bolt
123008-CO2	2	5/8" (15.88)	B	2-Bolt	123008-GX2	5	5/8" (15.88)	C	2-Bolt
123008-CX2	2	5/8" (15.88)	C	2-Bolt	123008-GO4	5	5/8" (15.88)	B	4-Bolt
123008-CS2	2	5/8" (15.88)	D	2-Bolt	123008-GX4	5	5/8" (15.88)	C	4-Bolt
123008-CT2	2	5/8" (15.88)	E	2-Bolt	123008-HN2	6	5/8" (15.88)	A	2-Bolt
123008-CU2	2	5/8" (15.88)	F	2-Bolt	123008-HO2	6	5/8" (15.88)	B	2-Bolt
123008-CO4	2	5/8" (15.88)	B	4-Bolt	123008-HO4	6	5/8" (15.88)	B	4-Bolt
123008-CX4	2	5/8" (15.88)	C	4-Bolt					
123008-CS4	2	5/8" (15.88)	D	4-Bolt					
123008-CT4	2	5/8" (15.88)	E	4-Bolt					
123008-CU4	2	5/8" (15.88)	f	4-Bolt					

ENGINE COUPLING REQUEST FORM

2-BOLT PUMP FACE

BOLT CIRCLE _____
DIAMETER _____

4-BOLT PUMP FACE

FLYWHEEL DATA

PILOT DIA _____
BOLT CIRCLE _____
OF HOLES _____

FLYWHEEL HOUSING DATA

PILOT DIA _____
BOLT CIRCLE _____
O.D. _____
OF HOLES _____

FLYWHEEL TO HOUSING

BACKSET _____

STANDARD DATA

PILOT DIA _____
SHAFT DIA _____
SHAFT LENGTH _____
FULL KEY/SPLINE LENGTH _____
PILOT LENGTH _____

SPLINE DATA

OF TEETH _____
D.P. _____
P.A. _____

PUMP SHAFT INFORMATION
