



UK Flowtechnik

Specialists in flow metering, pumps, couplings
and process measurement equipment

PRODUCT DATASHEET



UK Flowtechnik Ltd
1 Central Park
Lenton Lane
Nottingham
NG7 2NR
United Kingdom

Phone +44 (0) 11 59 01 71 11
UK Free Phone 0800 4334 770
Fax +44 (0) 11 59 86 88 75

sales@ukflowtechnik.com
www.ukflowtechnik.com

RN3 High Pressure (5000 PSI) Axial Turbine



The RN3 series high pressure axial turbine flow meters are most commonly used for hydraulic applications but can be used for low viscosity liquids such as water, light oils, solvents and low viscosity chemicals. The RN3 is highly accurate and often used for testing the performance of pumps, engines, valves and other flowmeters. In hazardous areas you can use the flowmeters with the Intrinsically Safe or Flame Proof pick-off coil with options for directly mounted displays.

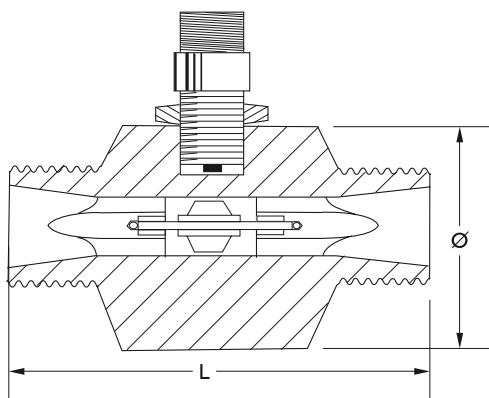
Features & Benefits

- Machined from a solid block of 316 Stainless Steel
- No internal seals
- BS5200 threaded connections with 60° cone seals
- Safe Area, Intrinsically Safe and Flame Proof designs
- Tungsten bearings for reliability and long life
- Options for Super Duplex rotor and Nickel/Tungsten bearings for sea water operation
- Options for directly mounted amplified pulse, signal converter or displays

Technical Data

	15/0.7	15/1	15/2	20/5	10/8	25/11	25/15	25	32	40	50
Flow Range l/min	0.7-7	1-10	2-20	5-50	8-80	11-110	15-150	25-250	45-450	67-670	110-1,100
Connection Size (BS5200)	1/2"	3/4"				1"		1.1/4"	1.1/2"	2"	
Meter Factor (Pulses per litre)	10,600	6,000	3,000	1,080	1,080	655	520	362	102	72	41
Body & Turbine Hangars Material	316 Stainless Steel										
Rotor Material	431 Stainless Steel (option for Ferralium 255/Super Duplex)										
Shaft/Bearing Material	Tungsten (Seawater resistant version with Ferralium rotor)										
Linearity	+/- 2% of Reading	+/- 1% of Reading			+/- 0.5% of Reading						
Max Pressure	345 Bar										
Max Temperature	110°C (232°C high temperature version)										
Output	mV Sine-Wave inductive pick-up (options for high temperature, ATEX/IECEX Intrinsically safe or ATEX Intrinsically Safe/Flame Proof dual certified pick-ups)										
Options	Amplified pulse output, 4-20 mA output, directly mounted battery powered displays (ATEX/IECEX versions)										

Dimensional Data



	L (mm)	Weight (Kg)
RN3/15/0.7	82.6	0.7
RN3/15/1	82.6	0.7
RN3/15/2	82.6	0.7
RN3/20/5	82.6	0.7
RN3/20/8	82.6	0.7
RN3/25/11	90.5	1.2
RN3/25/15	90.5	1.2
RN3/25	110.0	1.6
RN3/32	116.7	1.7
RN3/40	154.0	3.1
RN3/50	154.0	3.1

AXIAL TURBINE
FLOWMETERS

Ordering Information

RN3 / 40 / HP / FC7 -

Product Identifier

316 Stainless Steel Turbine
Flowmeter with BSPP Connections **RN3**
(BS5200 on 345 Bar model)

Flow Range l/min

0.7-7	15/0.7
1-10	15/1
2-20	15/2
5-50	20/5
8-80	20/8
10-110	25/11
15-150	25/15
25-250	25
45-450	32
67-670	40
110-1,100	50

Pressure Rating

Max 345 Bar (with BS5200 connections) **HP**

Pick-up & Integral Options

Standard Pick-up (mV sine-wave output, Mil-plug, Max 110°C)	--
ATEX EEx ia Pick-up (mV sine-wave output, 300mm flying lead [consult factory for longer lengths] Max 110°C)	EX
ATEX dual EEx d/EEEx ia Pick-up (C/W EEx d enclosure with ½" NPT cable entry)	EXD
High Temperature Pick-up, max 232°C (mV sine-wave output, Mil-plug, Max 110°C)	HT
Amplified Pulsed Output (12-24 Vdc, square-wave output with 4m cable)	PPW
4-20 mA Output (2 wire output, enclosure and bracket mount directly on the meter)	FC7
RT14 backlit rate totaliser with all outputs (GRN housing) [scaled pulse, alarms, 4-20mA, backlight]*	R5
Intrinsically safe RT14 backlit rate totaliser with all outputs (GRN housing) [scaled pulse, alarms, 4-20mA, backlight][IECEx & ATEX approved]*	R6
RT40 backlit rate totaliser with all outputs (GRN housing) [scalable pulse output, backlight]*	R7

Rotor Options

431 Stainless Steel Rotor	--
Ferralium 255 (super Duplex) Rotor	A