



# UK Flowtechnik

Specialists in flow metering, pumps, couplings  
and process measurement equipment

## PRODUCT DATASHEET



UK Flowtechnik Ltd  
1 Central Park  
Lenton Lane  
Nottingham  
NG7 2NR  
United Kingdom

Phone +44 (0) 11 59 01 71 11  
UK Free Phone 0800 4334 770  
Fax +44 (0) 11 59 86 88 75

[sales@ukflowtechnik.com](mailto:sales@ukflowtechnik.com)  
[www.ukflowtechnik.com](http://www.ukflowtechnik.com)

## RN3 Axial Turbine



The RN3 series axial turbine flow meter is used for liquids such as water, light oils, solvents (such as methanol) and low viscosity chemicals in applications such as batching, flow rate monitoring, controlling, blending and filling. The RN3 is highly accurate and often used for testing the performance of pumps, engines, valves and other flowmeters. In hazardous areas you can use the flowmeters with the Intrinsically Safe of Flame Proof pick-off coil with options for directly mounted displays.

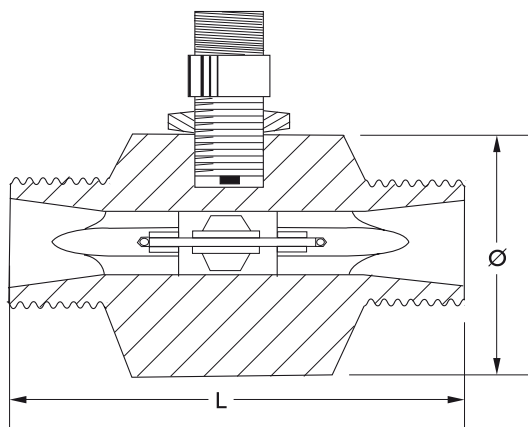
### Features & Benefits

- Machined from a solid block of 316 Stainless Steel
- No internal seals
- Safe Area, Intrinsically Safe and Flame Proof designs
- Tungsten bearings for reliability and long life
- Options for Super Duplex rotor and Nickel/Tungsten bearings for sea water operation
- Options for directly mounted amplified pulse, signal converter or displays

### Technical Data

	15/0.7	15/1	15/2	20/5	20/8	25/11	25/15	25	32	40	50	80											
Flow Range l/ min	0.7-7	1-10	2-20	5-50	8-80	11-110	15-150	25-250	45-450	67-670	110-1,100	225-2,250											
Connection Size	½"			¾"		1"			1.1/4"	1.1/2"	2"	3"											
Meter Factor (P/L)	10,600	6,000	3,000	1,080	1,080	655	520	362	102	72	41	16											
Body & Turbine Hangars Material	316 Stainless Steel																						
Rotor Material	431 Stainless Steel (option for Ferralium 255/Super Duplex),																						
Shaft/Bearing Material	Tungsten (Seawater resistant version with Ferralium rotor)																						
Linearity	+/- 2% of Reading	+/- 1% of Reading		+/- 0.5% of Reading																			
Max Pressure	35 Bar																						
Max Temperature (°C)	110°C (232°C high temperature version)																						
Output	mV Sine-Wave inductive pick-up (options for high temperature, ATEX/IECEx Intrinsically safe or ATEX Intrinsically Safe/Flame Proof dual certified pick-ups)																						
Options	Amplified pulse output, 4-20 mA output, directly mounted battery powered displays (ATEX/IECEx versions)																						

## Dimensional Data



	L (mm)	Weight (Kg)
<b>RN3/15/0.7</b>	82.6	0.7
<b>RN3/15/1</b>	82.6	0.7
<b>RN3/15/2</b>	82.6	0.7
<b>RN3/20/5</b>	82.6	0.7
<b>RN3/20/8</b>	82.6	0.7
<b>RN3/25/11</b>	90.5	1.2
<b>RN3/25/15</b>	90.5	1.2
<b>RN3/25</b>	90.5	1.1
<b>RN3/32</b>	110	1.6
<b>RN3/40</b>	116.7	1.7
<b>RN3/50</b>	154.0	3.1
<b>RN3/80</b>	200	10

## Ordering Information

