



# UK Flowtechnik

Specialists in flow metering, pumps, couplings  
and process measurement equipment

## PRODUCT DATASHEET



UK Flowtechnik Ltd  
1 Central Park  
Lenton Lane  
Nottingham  
NG7 2NR  
United Kingdom

Phone +44 (0) 11 59 01 71 11  
UK Free Phone 0800 4334 770  
Fax +44 (0) 11 59 86 88 75

[sales@ukflowtechnik.com](mailto:sales@ukflowtechnik.com)  
[www.ukflowtechnik.com](http://www.ukflowtechnik.com)

## G2 Precision Axial Turbine Flowmeters

A full line of FLOMEC® G2 Series Precision Turbine Meters are available in a variety of housing materials. Rugged and dependable, the G2 Series offers:

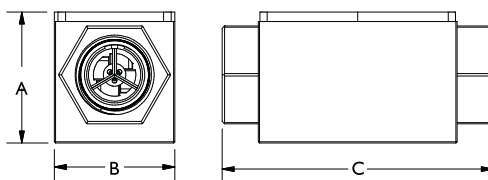
### Features & Benefits

- Meter is designed for thin fluids < 100 cp
- Modular design allows for use with Output Modules, Sensors and Remote Transmitters
- 2 Totals (Batch = Resettable, Cumulative = Non-resettable); Rate of Flow, Factory calibrated in gallons or litres. Field calibratable. Includes non-volatile totals.
- High accuracy meter
- Internal parts are simple to replace for easy maintenance
- AAA Alkaline battery life: 2 years

### Technical Data

	05	07	10	15	20
Flow Range l/min	3.8-38 (4.5-45 l/min for PVDF body)	7.6-76	19-190	38-380	76-760
Connection Size (Tri-Clamp Size)	½" (3/4")	¾" (1")	1" (1.1/2")	1.1/2" (2")	2" (2.1/2")
Meter Factor (P/L)	663	292	148	57	26
Body Material	316 Stainless Steel, Aluminium or PVDF (05 & 10 sizes only)				
Internals (Stainless Steel & Aluminium body)	PVDF rotor and hangars, Tungsten shaft, Ceramic bearings				
Internals (PVDF body)	PVDF rotor and hangars, Ceramic shaft & bearings, FKM seals (optional PTFE)				
Linearity (of reading)	+/-1.5%	+/-1%		+/-0.75%	
Max Pressure (Bar)	102 Bar (Stainless Steel), 21 Bar (Aluminium), 207 Bar (high pressure version), 6.9 Bar (PVDF version), Flanged & Tri-Clamp meters as per their rating				
Max Temperature (°C)	60°C (with directly mounted display), 121°C (Stainless Steel & Aluminium meters with remote display kit, 113275-10), 82°C (PVDF meters with remote display kit, 113275-10)				
Display	Battery powered LCD with Flow Rate & 2x totals (one with reset) in either Litres or US Gallons				
Options	Additional sandwich modules for dc power, scaled and unscaled pulsed output and 4-20 mA output				

## Dimensional Data



	A05	S05	P05	A07	S07	A10	S10	P10	A15	S15	A20	S20
A	46	36	81	51	41	56	49	84	71	66.0	81	79
B	51	51	53	51	51	51	51	71	69	69	84	86
C	107	107	185	109	109	114	114	206	135	135	160	160

## Ordering Information

