



UK Flowtechnik

Specialists in flow metering, pumps, couplings
and process measurement equipment

PRODUCT DATASHEET



UK Flowtechnik Ltd
1 Central Park
Lenton Lane
Nottingham
NG7 2NR
United Kingdom

Phone +44 (0) 11 59 01 71 11
UK Free Phone 0800 4334 770
Fax +44 (0) 11 59 86 88 75

sales@ukflowtechnik.com
www.ukflowtechnik.com

EX800 Series Insertion Magnetic Inductive Flowmeter



EX800-Series insertion electromagnetic flowmeters are designed for use with conductive liquids in 1 to 12" pipe. A choice of materials (stainless steel, brass, and PVC) allows the meter to adapt to a range of temperature, pressure, and corrosive environments.

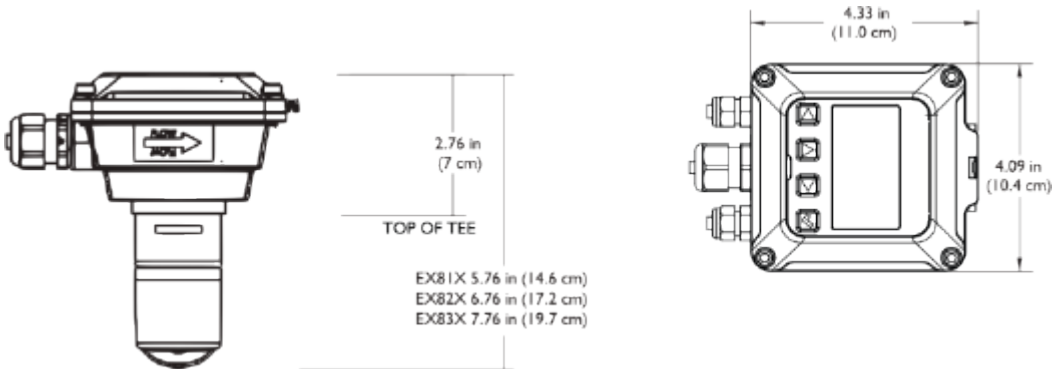
Features & Benefits

- Better low flow performance than a mechanical Pelton wheel
- Dedicated fitting for ease of installation
- No moving parts and low pressure drop from minimal insertion
- Pulse output with options for displays and analogue outputs

Technical Data

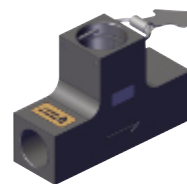
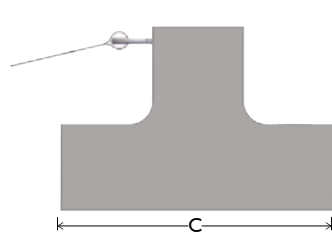
	1-12"
Velocity Range	0.08-6.09 M/S
Connection Size	Size for 1" to 3", 4" to 10" & 12"
Body Material	PVC/Brass or Stainless Steel (Electrode cap PVDF)
Electrode Material	Hastelloy
Seals	EPDM (option for Viton)
Linearity	+/- 1% FSD
Minimum Conductivity	>20 µS/cm
Max Pressure (Bar)	10 Bar (PVC), 14 Bar (Brass, Stainless Steel)
Max Temperature (°C)	93 °C (Brass, Stainless Steel) 55 °C (PVC)
Power Supply	12-24 Vdc, 250 mA (optional low power version 12-24Vdc, 40mA with 250mA peaks)
Output	NPN pulsed output, 500 Hz at 6.09 M/S
Options	Directly mounted display of flow rate and total, scaled/unscaled pulse & 4-20 mA

Dimensional Data

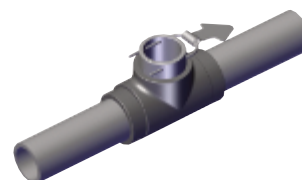
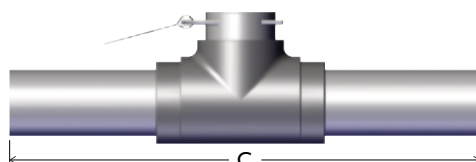


Dimensional Data

PVC Block Tee



PVC Pipe Tee



		C	F
1"	Block Tee	152	51
1.1/2"	Pipe Tee	490	-
2"	Pipe Tee	510	-

Ordering Information

EX8 2 0 B - 400 - 50 TC

Product Identifier

Insertion Magnetic Inductive
Flowmeter

EX8

For Pipe Size

1" to 3" Bore	1
4" to 10" Bore	2
12" Bore	3

Output

Pulsed Output Only	0
Directly Mounted FT430 Display (DC powered, flow rate, total, scaled and unscaled pulse output)	3
Directly Mounted FT440 Display (flow rate, total 2 wire 4-20 mA output, scaled pulsed output)	9

Body Material

PVC	P
Brass	B
316 Stainless Steel	S

Fitting Types

Threaded (NPT) Tee in Bronze (1"-4")	TB
Solder Tee in Bronze (1"-4")	TC-B
Solvent Weld Tee in PVC (1"-2")	TP
Threaded (NPT) Tee in Carbon Steel (1"-2")	TC
Threaded (NPT) Tee in 304 Stainless Steel (1"-2")	TS
Saddle in Cast Iron (3"-12")	SF
Saddle in PVC (3"-8")	SP
Saddle in Bronze (3"-4")	SB
Weldolet in Brass (3"-12")	WB
Weldolet in Carbon Steel (3"-12")	WC
Weldolet in 316 Stainless Steel (3"-12")	WS

Flow Ranges

1" (3-185 l/min)	100
1.1/2" (6-416 l/min)	150
2" (10-740 l/min)	200
3" (23-1,660 l/min)	300
4" (42-2,960 l/min)	400
6" (95-6,650 l/min)	600
8" (163-11,830 l/min)	800
10" (257-18,522 l/min)	1000
12" (374-26,650 l/min)	1200

Options

Reverse Flow Output	15
Tamper Evident Kit	32
Low Power Option	50
Non-resettable Total	64
Dual Relay Output	98
Viton® O-Ring	125
Hinged Display Cover	126