

SEN1600F Frequency to Analogue Signal Converter



The product is a cost effective “smart” powered conditioner that accepts all common process pulse signals. Typical applications would be to measure flow or batch counting. The product has a built-in capability to operate as a dual input which allows differential flow/count measurement with advanced maths functions. Or as a single channel input, with an external reset contact. When operated in signal channel mode, the discrete input can be programmed to reset the total counter, batch counter or latched relay. The input can also be programmed to control the total counter direction with a combination of count-up, count-down or halt modes available.

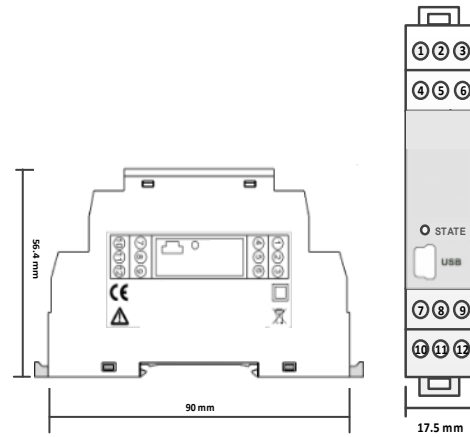
Features/Benefits

- Configurable via built-in USB port, PC or Android software
- 3 Operating Modes: Basic, Advanced & Counter
- Single or Dual input (depending on mode)
- Linearisation
- Signal retransmission scaling
- 65 kHz maximum input frequency

Technical Data

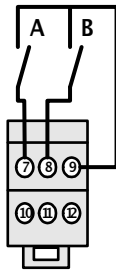
Technical Data		
Frequency Range	Flow Rate	0.1-65,000 Hz
	Counter	0-1,000 Hz
Power Supply	Input Voltage:	10-48 Vdc
	Current Draw:	Approx 50 mA
Sensor Inputs	Input Types:	NPN, PNP, contact closures, Namur or mV sine-wave signals
Status Signals	Green LED	Blinks at the same rate as the input
	Red LED	Loss of input signal or over-range
Analogue output	Configuration:	+/- 0-10V or 0(4)-20 mA
	Accuracy:	+/- 0.05%
Sensor Supply	NPN, PNP, contact closure	15 Vdc @ 25mA
	Namur	8 Vdc @ 25mA
Relay Alarm Output	1x N/O or N/C contact	24 Vdc max, 0.5 A
Housing	Mounting	EN60715 35mm DIN rail
	Width	17.5mm
Temperature	Operation/Storage:	-20 to +70°C
Conformity and Standards	EMC	BS EN 61326
	IP rating	BS EN 60529
	RoHS	Directive 2011/65/EU

Dimensional Data

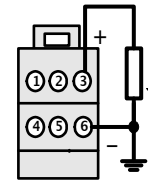


Electrical Data

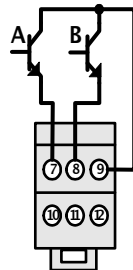
Reed Switch Input



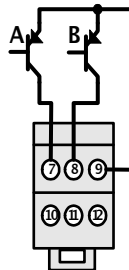
3 wire 4-20 mA Output



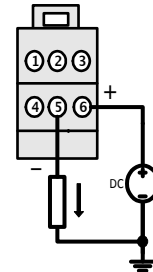
NPN Isolated Input



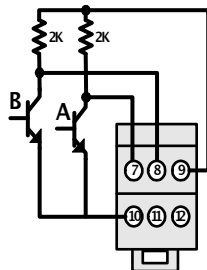
PNP Input



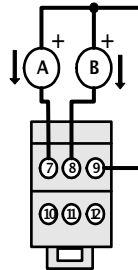
2 wire 4-20 mA Output



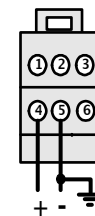
NPN Non-isolated Input



Namur Input (8v supply)



+/- 0-10V Output



Order Code

Basic Frequency
Advanced Frequency
Pulse Counter

SEN1600F